

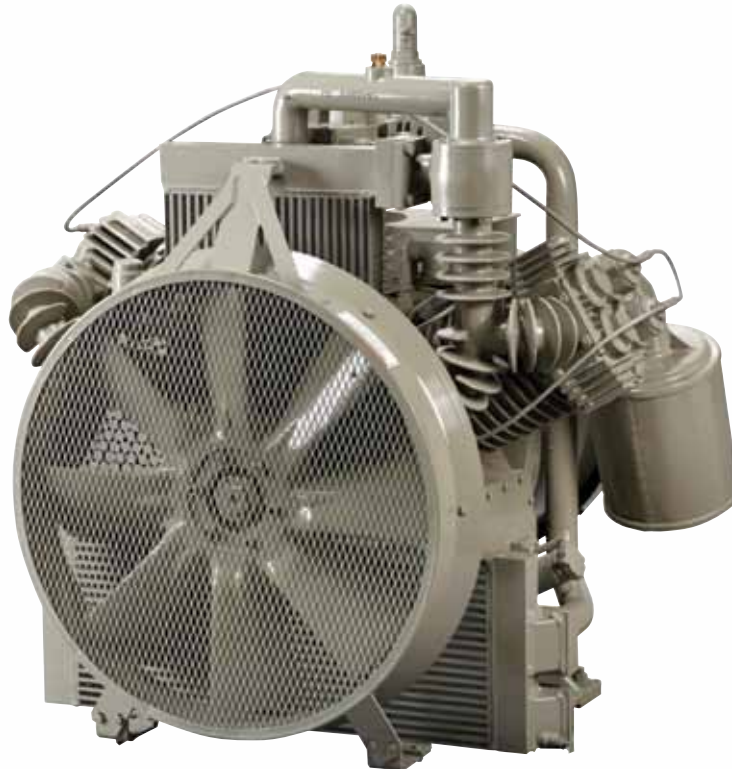
Pneumatics

Compressors

Business Unit: WABCO Locomotive Products

Offering a complete line of air-cooled, water-cooled, and rotary compressors, Wabtec provides original equipment and can rebuild main line reciprocating compressors.

3 Cylinder Air Cooled Compressor (3CD™)



Features & Benefits

- Pulley shaft or motor drive
- Single or dual speed motor drive
- Various motor voltages available
- Stainless steel braided unloader tubing
- Rated for continuous or start/stop operation
- Stand alone or palletized
- 1100 RPM rated speed; 140 psi rated pressure
- Displacement at rated speed: 247.5 CFM
- 60 HP at rated speed and pressure

Pneumatics

Compressors (continued)

3CD™ Compressor Upgrades



Integral Aftercooler

- Efficient, cost effective, maintenance-free way to precipitate moisture from compressed air braking systems
- Reduces the need for cooling piping or tubing between the discharge and the first main reservoir



Thermostatically Controlled Intercooler (TCIS™)

- Designed for motor driven compressors that operate start/stop
- Eliminates water condensate in oil by maintaining a stable intercooler temperature



Rapid Unloader

- Vents intercooler pressure in under 2 seconds
- Prevents motor stalls by removing air load when starting
- Eliminates manual intercooler draining procedure
- 75 watt heater to protect against freeze-ups



One Piece Molded Fan

- Simplified design
- Higher cooling efficiency
- Virtually indestructible



Gear Drive Pump / Spin-on Oil Filter

- Integral Gear Pump Drive and Spin on Oil Filter OEM upgrade from current plunger oil pump and mechanical strainer
- External Spin-on Oil Filter promotes compressor maintainence and decreases maintainence time
- Available on new compressor series