

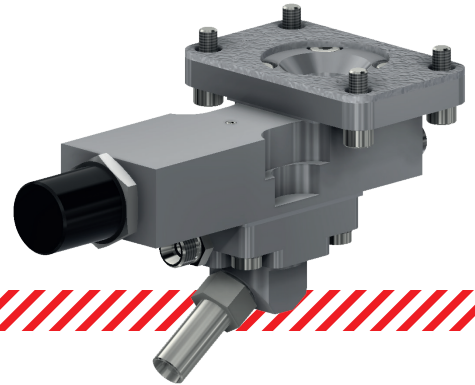


Innovating
to improve
performance
and safety



Dosage P15

Pneumatic



Pneumatically activated dosage piston has been developed for precise batching of sand and for the safe blocking of the sand container. The P15 dosage was specially designed for an easy and quick integration in vehicles. This property is particularly important in the conversion of existing vehicles in order to make the sanding system compatible to the current standards (TSI, GMRT2461, B011). The functional principle was developed in a similar way to that of a piston

operated valve. It is activated by a pneumatic cylinder. The sand amount can be continuously adjusted via the hoist setting of the magnet accessible from the outside. The interruption of the sand flow takes place by the operation of a spring. All crucial components are totally enclosed against external influences (e.g. crushed stone flight).

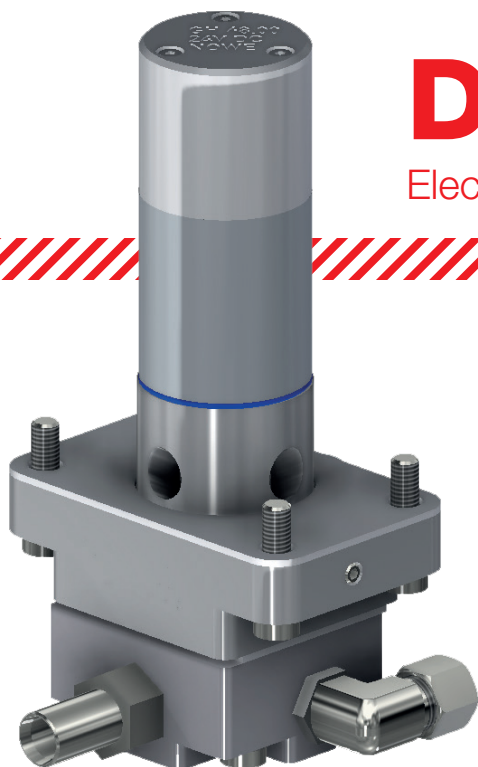
Technical characteristics

Total weight	• 1,6 kg
Sand quantity	• Adjustment range : 300g/30s... 800g/30s • 1 st stage : 400g/30s ± 100g/30s • 2 nd stage : 650g/30s ± 150g/30s
Sand quality	• According to BN 918 224
Requirements for compressed air Classes acc. to ISO 8573-1:2010	• Particles : 7 (size ≤ 40µm/Concentration ≤ 10 mg/m ³) • Humidity & water : 2 • Oil (global) : 4 (≤ 5 mg/m ³)
Air consumption	• About 120 l/min at 5,5 bars
Working pressure	• 1 st stage : 5,5 bars (± 0,5 bars) • 2 nd stage : 7,5 bars (± 0,5 bars)
Operating temperature	• -40...+85°C (DIN EN 50100 Kategorie Tx)



Dosage N45

Electric



Magnet-activated piston dosage has been developed for precise batching of sand- and for the safe blocking of the sand container. The functional principle was developed in a similar way to that of a piston-operated valve. It is activated by a hoist magnet. The setting of the sand amount is about the relationship between ON-and OFF-time. The pulse signal is generated in the vehicle control or over a programmable time delay relay with semiconductor. The interruption of the sand flow takes place by the operation of a spring.

Technical characteristics

Weight	• 2,2 kg
Sand quantity	• Adjustment range : 150-1100g/30 sec \pm 10% (infinitely adjustable) during nominal voltage
Sand quality	• According to BN 918 224
Requirements for compressed air Classes acc. to ISO 8573-1:2010	• Particles : 7 (size \leq 40 μ m/Concentration \leq 10 mg/m ³) • Humidity & water : 2 • Oil (global) : 4 (\leq 5 mg/m ³)
Air consumption	• About 120 l/min at 5,5 bars
Working pressure	0,5 to 10 bar
Operating temperature	• -40...+85°C (DIN EN 50155 Kategorie T3)
Operating voltage	24 and 110 V DC* \pm 30%
Power	Approx. 50W (40% ED/S3)
Safety Class	IP66
Operating temperature	• -25...+70°C (DIN EN 50155 Kategorie T3)

To discover everything sanding can do, please contact us at:

NOWE GmbH
Heilswannenweg 66, 31008 Elze - Germany
www.wabtec.com
email: info.nowe@wabtec.com