

Barber® Bolster and Side Frame Castings

Business Unit: Standard Car Truck

As a leader in providing stabilization systems for freight cars, Standard Car Truck offers bolster and side frame castings.



Features / Benefits:

- Designed and tested by Standard Car Truck to meet or exceed AAR M-202 / 203 Standards
- Manufactured in AAR M-210 and M-1003 Approved Foundries under Standard Car Truck supervision
- Inspection / process monitoring exceeds AAR Requirements
 - 100 % Magnetic Particle inspected for cracks (no AAR Requirement)
 - 100 % Gaging (AAR requires sampling only)
 - Detailed Product Quality scoring system
- 15 year successful service history

110 T Trucks for M-976 / S-286 Service

- S-2-HD 9 Coil (M-976 Approved)
- S-2-HD 6 Coil – Low Profile (M-976 Approved)
- S-2-E 917 Integral Wedge (M-976 Approved)
- S-2-E 945 Split Wedge (S-286 Approved)

Other Gross Rail Loads – Intermodal and Other Service:

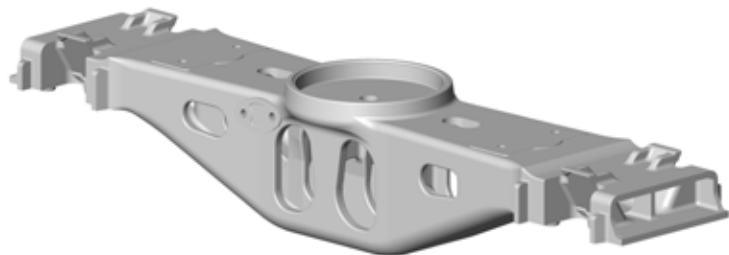
- 125 T S-2-HD
- 70 T S-2-C

Truck Components

Reduced Weight Truck Castings

Business Unit: Standard Car Truck

As a leader in providing stabilization systems for freight cars, Standard Car Truck offers bolster and side frame castings.



S-2-HD-9C LW (F-1449 Bolster, F-1490 Side Frame)

- 6532 # nominal carset weight (including fittings)
- Tested in excess of M-202 / M-203 Requirements
- 100 % Magnetic Particle Inspection
- AAR Approved March 2014